

# Angel Tree



## Topper

How you may use my patterns:

All of my craft patterns are copyrighted to me, Heidi Butters. You may create a reasonable amount of items from my patterns to sell for profit, charity or no charge as long as you give me credit for the design. You MAY NOT mass produce items from my patterns. You may print copies for personal use only, any other means of reproduction, digitally or otherwise is prohibited. You MAY NOT alter or change pattern in anyway without written permission. No whole-selling items my from my patterns. If you have any questions, please email me at [hhbutters@gmail.com](mailto:hhbutters@gmail.com)

## Angel Tree Topper



What you need: 1/4 yd white cotton fabric  
1/16 yd muslin  
thread- white, cream and yellow.  
black permanent marker- fine point  
blush  
batting  
patterns  
20 oz empty, washed pop bottle  
hot glue gun  
1 1/2 yds 1 1/2-inch white lace that is slightly gathered.  
1 1/2 yds string of gold beads.  
1 sheet yellow felt  
1 sheet white felt-optional  
Sewing machine or needles  
pins  
scissors  
Glitter painter or glue  
gold pipe cleaner or 4-inches of golden Christmas garland.  
light yellow crochet thread

What yo do:

1- ✂Cut off about 1-inch off the bottom of bottle, remove lid.

2-Cut head and arms out of muslin. Sew around head leaving bottom open. Turn right side out and stuff firmly with batting.

3- Place head over neck of bottle. Glue with glue gun.

4- Dress. Cut a piece of white cotton fabric 9" X 22". ✂Fold down and hem one of the long sides 1/4 " (top of dress). Cut a piece of lace 22 inches ✂match right sides together to un-hemmed long side of dress, sew. Fold seam under and top-stitch. Now bring short sides (right sides) together. Sew. Turn right side out. Gather top of dress and slip over head of doll, pull tight and glue at the neck. (Make sure that the ruffles are even around your doll, before gluing. )

5-Cut 9-inches of lace Sew ends together, gather, glue around neck over dress. This is her collar.

6- Cut sleeves out of white cotton fabric. Cut 2, 7 1/2-inch pieces of lace. Sew to bottom of sleeves; right sides together. Fold seams under, top-stitch. ♦Fold sleeves in half, sew.

7- Sew arms, turn right-side out and stuff firmly with batting. Glue opening shut. Slightly stuff sleeves, gather around opening, insert arm, pull tight and glue into place. ♦Glue top of sleeve to doll, by neck where her shoulders would be.

8-The hair is a little tricky. Take the crochet thread and wrap it around a piece of cardboard that is four inches wide. Wrap around about a hundred times, cut one end. Carefully lay in a flat layer on sewing machine and zig-zag over hair along one edge. ♦For bangs, Wrap crochet thread around three fingers ten times, cut one side, folded in half glue bangs in place on front of doll. Take the hair you zig-zagged together. and glue so that the sewed edge is pointing to the middle of the back of her head. Glue hair around back of head. Tie hair together with ribbon.

9- Glue golden beads around bottom of dress, sleeves and around collar. ♦Make halo out of pipe-cleaner and glue to hair.

10- With black mark give her two eyes, and brush some blush on her cheeks.

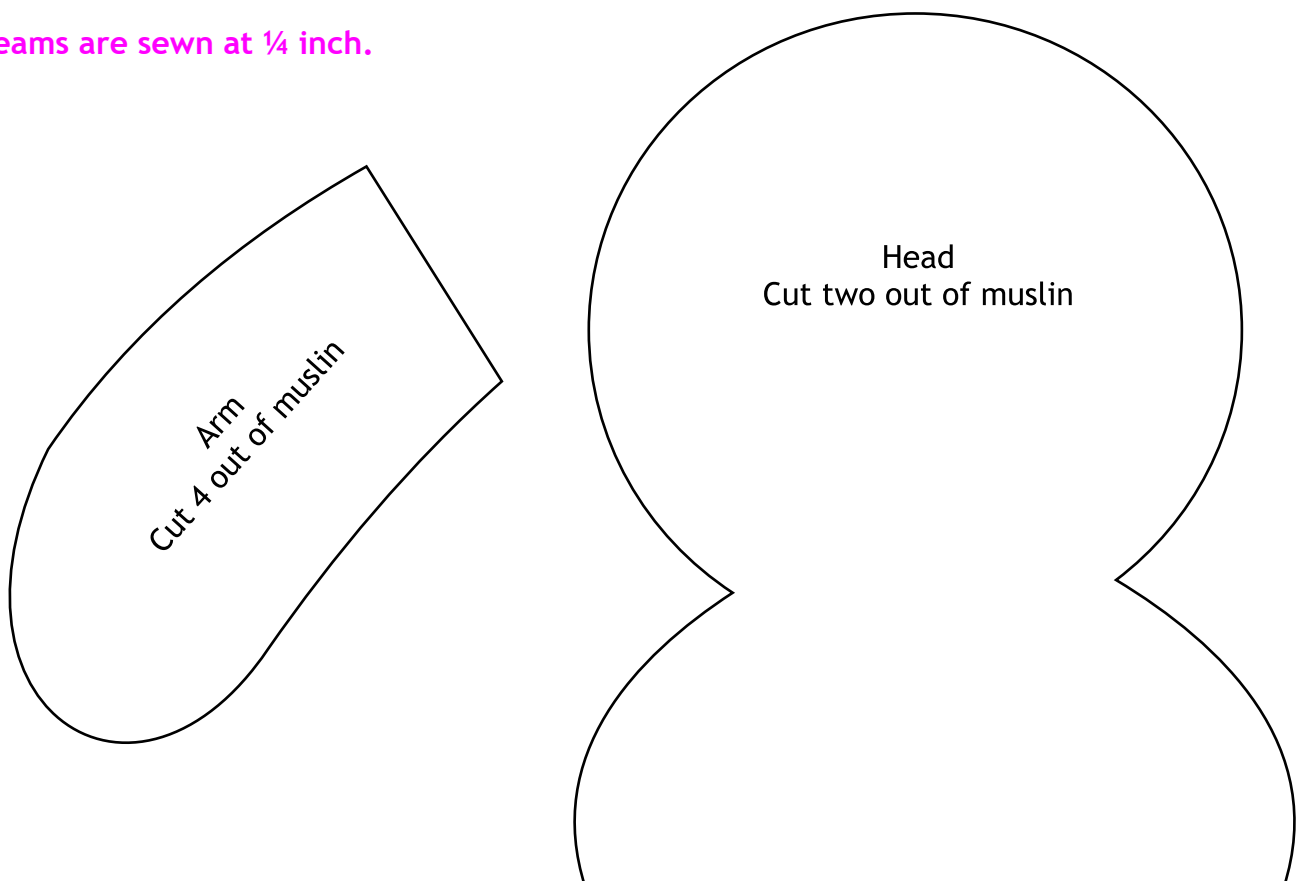
#### Star

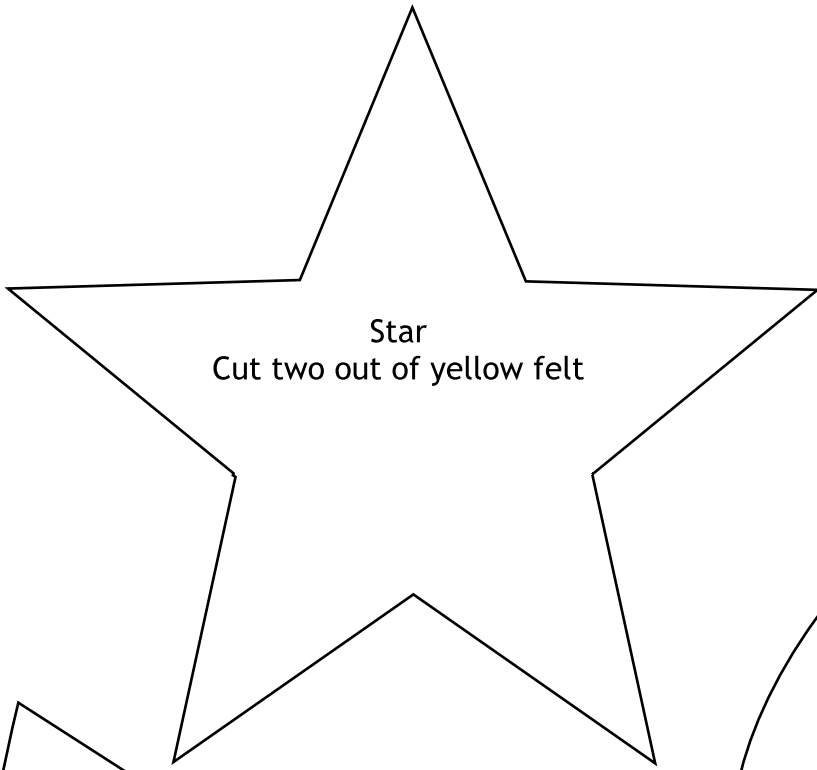
Zig-zag around star, leaving opening. Stuff lightly. Sew shut opening. Glue on to angels hands. You can decorate with strands of gold beads if you want.

#### Wings (optional)

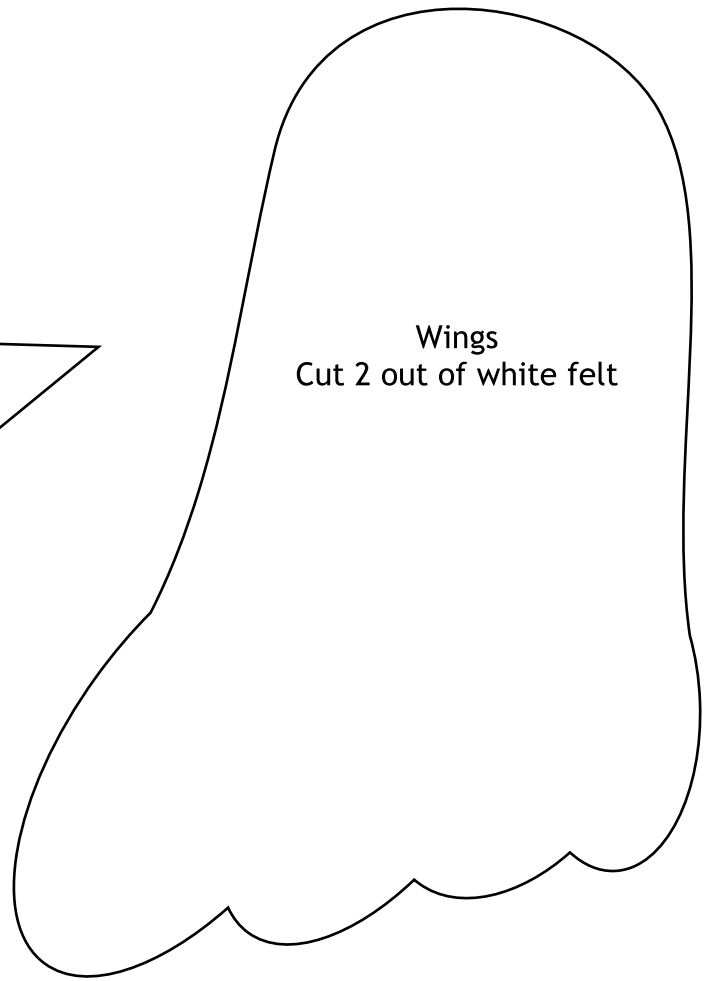
Cut out two wings from white felt and glue on to back of angel.

All seams are sewn at 1/4 inch.

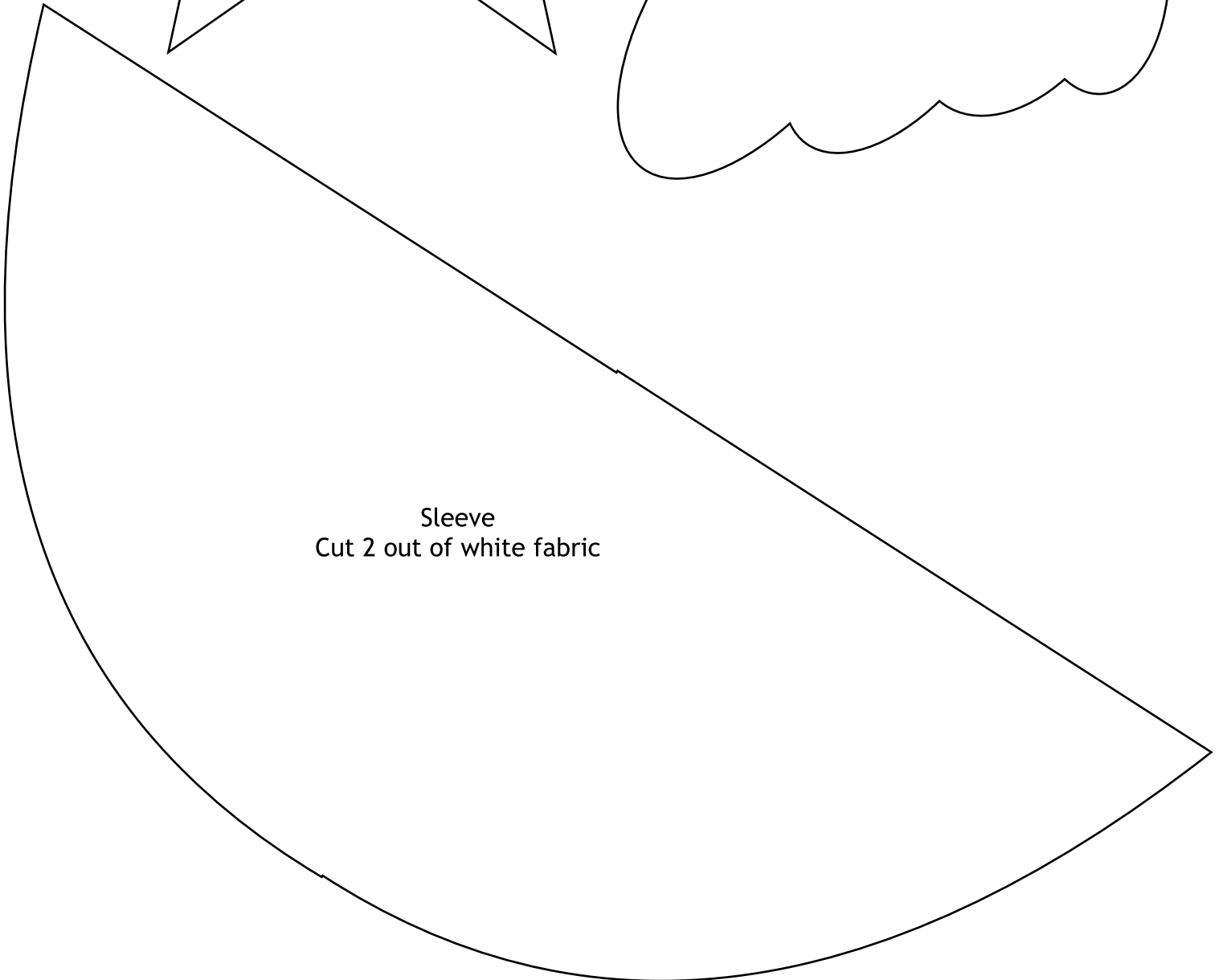




Star  
Cut two out of yellow felt



Wings  
Cut 2 out of white felt



Sleeve  
Cut 2 out of white fabric